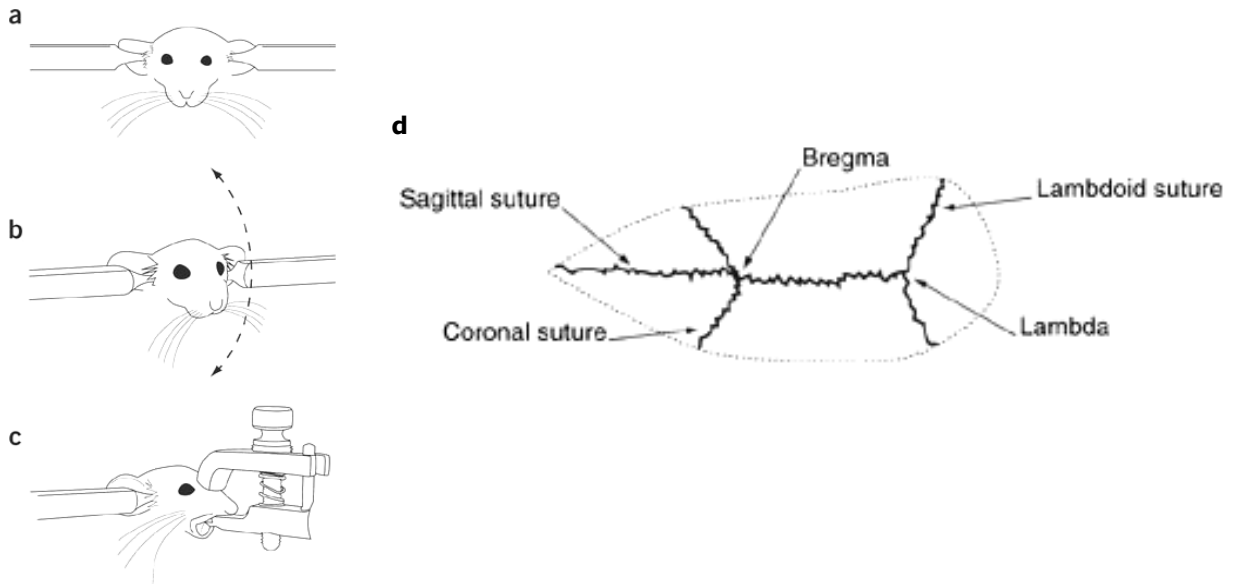


Steps for positioning a mouse in a stereotaxic apparatus



Illustrations by J. Kuhl-Osten

Reprinted by permission from Macmillan Publishers Ltd:
Nature Protocol <http://www.nature.com/nprot/index.html> (2007) 2.a.-c., 4.
Copyright © 2007 by Nature Publishing Group

- 1.) To place the mouse in the stereotaxic apparatus, symmetrically fix the position of the animal's head by gently positioning the intra aural positioning studs into the animal's ear canal.
- 2.) Slowly position the second ear stud into the opposite ear to complete fixation (see a. and b. above); use only blunted style ear studs for survival procedures.
- 3.) If using a nose clamp, gently position by resting on top of the nose using very low pressure (see c. above).
- 4.) Measure the position of the x and y coordinates of bregma and subtract the coordinates of the target site, as determined from a stereotaxic brain atlas. The rodent skull surface diagram (see d. above) includes the sagittal, coronal and lambdoid sutures defining the Stereotaxic landmarks bregma and lambda.